

FOREO
SWEDEN



LUNA™ 4 play smart

FACIAL CLEANSING DEVICE

With Skin Moisture Analysis



ONLINE MANUAL

FULL USER MANUAL

GETTING STARTED

Congratulations on taking the first step toward discovering smarter skincare by acquiring LUNA™ 4 play smart. Before you begin to enjoy all the benefits of sophisticated skincare technology in the comfort of your home, please take a few moments to carefully read the instructions in this manual.

Please READ ALL INSTRUCTIONS BEFORE USE and utilize this product only for its intended use as described in this manual.

⚠ **WARNING:** No modification of this equipment is allowed.

LUNA™ 4 play smart OVERVIEW

Meet LUNA™ 4 play smart – clinically proven to remove 99% of dirt, oil and makeup residue. This smart little facial device cleanses deep within pores, where your fingers just can't reach.

The best part? LUNA™ 4 play smart measures how healthy your skin is by analyzing its moisture levels, and then creates a personalized cleansing routine that evolves with your skin's needs. It's time to get smart about your skin!

GETTING TO KNOW LUNA™ 4 play smart



HOW TO USE YOUR LUNA™ 4 play smart UNLOCK YOUR DEVICE

Before first use, download the FOREO For You mobile app to unlock and register your device. Follow these simple steps:

1. Download the FOREO For You app on your mobile phone.
 2. Log in to your existing account, or sign up for a new one.
 3. Add device (on the top of your screen).
 4. Choose the device series.
 5. Follow the instructions on the app and fill in the purchase information.
- And your device is ready to use!

www.foreo.com/app

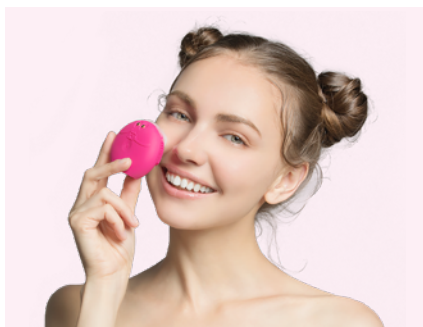


HOW TO USE



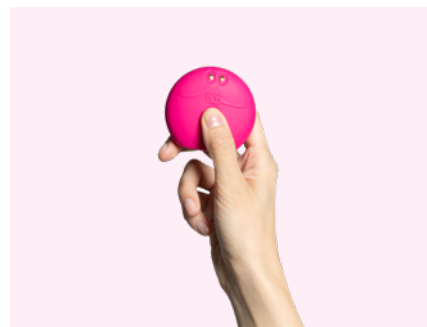
1. ANALYZE SKIN

Press and hold the skin sensors on the back of the device to your cheeks, forehead, side of nose & chin, so the app can analyze the moisture level on each area. The app will then instantaneously sync a customized cleansing routine to your device.



2. CLEANSER

Apply your facial cleanser evenly over damp face & neck. Wet LUNA™ 4 play smart. Then press the universal button to turn on your device. You can adjust the intensity of the T-Sonic™ pulsations with the + and - buttons. Then glide the device in circular motions over your face & neck.



3. RINSE

Once skin is cleansed, press the universal button to turn off LUNA™ 4 play smart, (or it will automatically turn off after 1 min). Then rinse your face & neck, and the device.

TIP: For best results, take your skin reading once a week at the same time of day, or when traveling to a new environment.

NOTE: Avoid using clay-based, silicone-based or grainy cleansers, exfoliators or scrubs, as they may damage the device's soft silicone touchpoints.

CLEANING YOUR DEVICE

Always clean your device thoroughly after use. Wash the brush surface with water and soap, then rinse with warm water. For optimal results, we recommend spraying the device with FOREO Silicone Cleaning Spray once a week, and rinsing with warm water.

NOTE: Never use cleaning products containing alcohol, petrol or acetone, as they may irritate the skin and damage the silicone.

IMPORTANT

FOR OPTIMUM SAFETY:

- If you have a skin condition or any medical concerns, please consult a dermatologist before use.
- Cleansing with LUNA™ 4 play smart should be comfortable – if you experience discomfort, discontinue use immediately and consult a physician.
- Exercise particular care when cleansing the under-eye regions and do not bring the device into contact with the eyelids or eyes themselves.
- For reasons of hygiene, we do not recommend sharing your device with anyone else.
- Avoid leaving your device in direct sunlight and never expose it to extreme heat or boiling water.
- Close supervision is necessary when this device is used by, on, or near children, as well as those with reduced physical and mental abilities.
- Discontinue use if this product appears damaged in any way. This product contains no serviceable parts.
- Given the efficiency of the FOREO cleansing routine, we recommend that you do not use LUNA™ 4 play smart for more than 3 minutes at a time.
- Use this device only for its intended use as described in this manual. If you do not find the answer to your specific question, or if you have any other questions regarding the device's operation, please visit www.foreo.com

TROUBLESHOOTING

Precautions to be taken in the event of changes in the performance of LUNA™ 4 play smart.

If LUNA™ 4 play smart cannot be switched off and/or interface buttons do not respond:

- Battery is dead.
- Microprocessor is temporarily malfunctioning. Press and hold the universal button to restart the device.

If LUNA™ 4 play smart is not picking up your skin during the skin analysis:

- Make sure the device is completely dry and then restart the device.
- Be sure to firmly press both sensors flat on skin.

If LUNA™ 4 play smart won't sync to the FOREO For You app:

- Ensure that your Bluetooth is turned on.
- Switch your Bluetooth off and then on again to try reconnecting.
- Close the FOREO app and then reopen it to start the process over.
- Delete and update / reinstall the app.
- After deleting and reinstalling the app, make sure to restart your phone.
- Delete your phone's cookies and cache memory.
- Ensure that your mobile's operating system has been updated to the latest version.

DISPOSAL INFORMATION

Disposal of old electronic equipment (applicable in the EU and other European countries with separate waste collection systems).



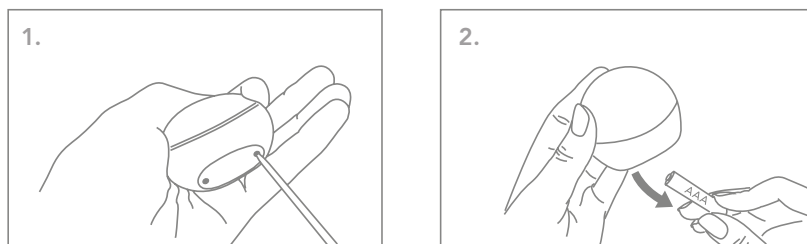
The crossed-out dustbin symbol indicates that this device should not be treated as household waste, but rather be brought to the appropriate collection point for recycling of electrical and electronic equipment. By ensuring this device is disposed of correctly, you will help prevent the potential negative consequences for the environment and human health which could be caused by inappropriate waste handling of the product. The recycling of materials will also help conserve natural resources.

For more information about the recycling of your device, please contact your local household waste disposal service or your place of purchase.

BATTERY REMOVAL

NOTE: This action must only be undertaken when the device is ready to be disposed of.

This device contains 2 batteries, which must be removed before disposal and should not be thrown away with household waste. To remove the batteries, unscrew the battery cover on the base of the product. Then carefully remove the batteries inside.



SPECIFICATIONS

MATERIALS: Body-safe silicone, PC + ABS

COLOR: Cherry Up! / Tickle Me Pink! / Peek-A-Blue! / Mint For You! /
Lemon Squeazy! / Midnight Magic!

SIZE: 60 × 65 × 30 mm

WEIGHT: 70g

USAGE: Up to 1000 uses

STANDBY: 180 days

MAX NOISE LEVEL: <60dB

INTERFACE: 1- button

DISCLAIMER: Users of this device do so at their own risk. Neither FOREO nor its retailers assume any responsibility or liability for any injuries or damages, physical or otherwise, resulting directly or indirectly from the use of this device. Furthermore, FOREO reserves the right to revise this publication and to make changes from time to time in the contents thereof without obligation to notify any person of such revision or changes.

CAUTION: Changes or modifications to this unit not expressly approved by the party responsible for compliance could void the user's authority to operate the equipment.

NOTE: This device complies with Part 15 of the FCC Rules and contains licence-exempt transmitter(s)/receiver(s) that comply with Innovation, Science and Economic Development Canada's licence-exempt RSS(s). Operation is subject to the following two conditions:

- (1) This device may not cause interference.
- (2) This device must accept any interference, including interference that may cause undesired operation of the device.

FOREO declares that this device is in compliance with Directive 2014/53/EU. The full text of the EU declaration of conformity for the product is available at www.foreo.com/support/eu-conformity.

Model may be changed for improvements without notice.

FAQS

LUNA™ 4 play smart BASICS

1. WHAT COMES WITH MY LUNA™ 4 play smart?

1x LUNA™ 4 play smart, 1x basic manual.

2. WHAT SHOULD I DO AFTER I RECEIVE MY LUNA™ 4 play smart?

Congratulations on taking the first step toward discovering smarter skincare by acquiring LUNA™ 4 play smart. Before you begin to enjoy all the benefits of sophisticated skincare technology, download the FOREO For You app for free to unlock and register your device for first time use. (For more information, please refer to the section below titled 'THE APP').

3. WHY DO I NEED TO DOWNLOAD THE FOREO For You APP BEFORE USING MY DEVICE?

All FOREO devices need to be activated and unlocked via the FOREO For You app the first time they are turned on. This helps protect against fake/copied FOREO products.

4. HOW DO I TURN MY LUNA™ 4 play smart ON?

Turn your LUNA™ 4 play smart on by pressing the universal button once.

5. HOW DO I TURN MY LUNA™ 4 play smart OFF?

To turn your device off, press and hold the universal button for 3 seconds. After completing a pre-set customized cleansing routine, the device will turn off automatically.

6. HOW DO I CLEANSE MY SKIN?

Dampen your skin and apply your regular face cleanser. Then dampen the device. Cleanse using gentle circular movements on cheeks and forehead, gliding up and down the nose. LUNA™ 4 play smart will pause to tell you when to move to the next area of your face. Rinse and pat your face dry. Wait an additional 2 minutes for your face to fully dry and then conduct your skin analysis.

7. HOW OFTEN SHOULD I CLEANSE MY SKIN WITH LUNA™ 4 play smart ?

We recommend using your LUNA™ 4 play smart any time your skin needs a deep cleanse.

8. WHICH FACIAL CLEANSERS CAN BE USED WITH MY LUNA™ 4 play smart ?

You can use any facial cleanser with your LUNA™ 4 play smart, but to keep your device in optimal condition, avoid clay-based, silicone-based, or grainy cleansers as they may damage the silicone.

9. WHAT MAKES MY LUNA™ 4 play smart MORE EFFECTIVE THAN CLEANSING DEVICES WITH NYLON BRISTLES?

Unlike nylon bristles, silicone bristles are non-porous, meaning they are resistant to bacterial buildup and 35x more hygienic than standard nylon brushes. With the help of T-Sonic™ massage, the soft silicone bristles remove 99% of dirt, oil and makeup residue.

10. CAN MY LUNA™ 4 play smart REPLACE MAKEUP REMOVERS?

We suggest you remove makeup before use for more effective cleansing.

11. WHAT IS T-SONIC™ TECHNOLOGY?

The high-efficiency motor that powers your LUNA™ 4 play smart is capable of providing more than 8,000 oscillations/minute. This high-speed movement generates subtle pulsations, which we refer to as T-Sonic™ massage. The 'T' in T-Sonic™ is short for transdermal - so named because these pulsations travel through the outer layers of skin, working to stimulate blood flow and loosen impurities trapped within pores.

12. HOW DO I CONDUCT MY FIRST SKIN ANALYSIS?

Make sure your skin is completely clean and dry before you begin your skin analysis. Sync your LUNA™ 4 play smart to the app, and press ANALYZE. Press and hold the skin sensors on the back of the device to your cheeks, forehead, side of nose, and chin. When the app indicates, proceed to the next area. The FOREO For You app will then analyze the moisture level of your skin, and instantaneously sync a customized cleansing routine to your device.

13. HOW OFTEN SHOULD I TAKE MY SKIN ANALYSIS?

For best results, we recommend taking your skin analysis once a week at the same time of day each time, or when traveling to a new environment.

14. WHY IS SKIN MOISTURE SO IMPORTANT?

Skin moisture acts as a protective barrier to stop the skin from becoming tight and dry. It also prevents bacteria growth, and promotes skin cell regeneration and elasticity. After analyzing your skin's moisture levels, the app will create a customized cleansing routine perfectly tailored to your skin needs, and will sync it to your device - ensuring that you always have healthy, hydrated, and glowing skin.

15. IS MY LUNA™ 4 play smart SUITABLE FOR ALL SKIN TYPES?

Yes, LUNA™ 4 play smart is specifically designed to be suitable for all skin types. LUNA™ 4 play smart features a 2-zone brush head, with thinner ultra-soft and gentle touchpoints to deeply yet delicately cleanse normal and sensitive skin types, and thicker touchpoints with increased curvature and thickness to deep cleanse for problematic areas such as the T-zone.

16. CAN I USE MY LUNA™ 4 play smart IF I HAVE SKIN CONDITIONS SUCH AS ACNE OR ECZEMA?

We suggest that anyone who suffers from a serious skin condition to consult their physician before using LUNA™ 4 play smart.

THE APP

17. HOW DO I CONNECT MY LUNA™ 4 play smart TO MY SMARTPHONE?

Download the FOREO For You app to your smartphone or tablet to register and unlock your device. Open the FOREO For You app and turn on your Bluetooth. Sync your LUNA™ device by pressing and holding the universal button for five seconds until the camera symbol on your LUNA™ 4 play smart starts blinking.

18. WHAT IS THE PURPOSE OF THE APP?

The FOREO For You app allows all FOREO devices to be unlocked and registered, which helps protect against fake/copied FOREO products. With LUNA™ 4 play smart, the app has a skin moisture analysis feature that allows you to measure your skin, and then create a personalized cleansing routine that is perfectly tailored to meet your skin's needs, which it syncs to your device for ultimate ease.

19. HOW DO I GET MY OWN CUSTOMIZED CLEANSING ROUTINE?

Sync your LUNA™ device to the FOREO For You app. Press and hold the skin sensors on the back of the device to each area of your face, as indicated in the app. The FOREO For You app will then analyze the moisture level of your skin, and instantaneously sync a customized cleansing routine to your device.

20. DOES MY LUNA™ 4 play smart WORK WITHOUT THE APP?

LUNA™ 4 play smart's cleansing mode does not require use of the FOREO For You app. However, to unlock your device for the first use, you must register your device through the app and conduct a skin analysis - after which the app will automatically sync your customized cleansing routine to your device for all future uses (until the next time you conduct a skin analysis).

TROUBLESHOOTING & MAINTENANCE

21. WHAT DOES IT MEAN WHEN MY LUNA™ 4 play smart IS CONTINUOUSLY BLINKING?

If the indicator light on your device is continuously blinking, it could mean that your LUNA™ device is in Bluetooth pairing mode. Follow the instructions in the app to sync your device.

22. WHAT SHOULD I DO IF MY LUNA™ 4 play smart WON'T CONNECT TO THE FOREO FOR YOU APP?

Switch your Bluetooth off and then on again to try reconnecting. If that doesn't work, close the FOREO For You app and then reopen it to start the process over.

23. WHY IS MY LUNA™ 4 play smart NOT ACTIVATING WHEN I PRESS THE UNIVERSAL BUTTON?

If your LUNA™ 4 play smart is not activating when pressing the universal button, it means your battery is empty.

24. WHY IS MY LUNA™ 4 play smart NOT PICKING UP SKIN DURING MY SKIN ANALYSIS?

Make sure the device is completely dry and then restart the device. Be sure to firmly press both sensors flat on skin.

25. WHAT HAPPENS IF THE SKIN SENSORS GET WET?

LUNA™ 4 play smart is completely waterproof, and can even be used in the shower. However, for the most accurate results when conducting your skin analysis, make sure that both the device and your skin are completely dry before use.

©2025 FOREO AB. ALL RIGHTS RESERVED. MANUFACTURED FOR FOREO AB.

EU DISTR.: FAQ EUROPE D.O.O., RADNICKA CESTA 202, 10 000, ZAGREB, CROATIA.

US DISTR.: FOREO INC., 1525 E PAMA LANE, LAS VEGAS, NV 89119, USA.

AUS DISTR.: FOREO AUS., 6 PROHASKY STREET, PORT MELBOURNE, VIC, 3207 AUSTRALIA.

UK RP: FOREO LTD., LAWFORD HOUSE, ALBERT PLACE, N3 1QA LONDON.

WWW.FOREO.COM